



# KNOVI MONITORING TECHNOLOGY™ SYSTEMS INSTALLATION GUIDE

## **TOOLS REQUIRED:**

*PHILIPS HEAD SCREWDRIVER*

*SMALL ADJUSTABLE WRENCH OR A 5/8" WRENCH*

*A 3/16" DRILL BIT FOR UNIVERSAL BRACKET*

***ANY TOOLS REQUIRED TO REMOVE THE DRAIN COVER ON THE ROOF***

## STEP 1 SMARTGATEWAY INSTALLATION

1. FIND A LOCATION TO INSTALL THE SMARTGATEWAY. IDEALLY THIS WILL BE BY A WINDOW OR ON ONE OF THE INTERIOR WALLS CLOSE TO THE EXTERIOR SENSORS. YOU WILL REQUIRE AN ELECTRICAL OUTLET TO BE WITHIN SIX FEET OF THE SMARTGATEWAY INSTALLATION LOCATION.



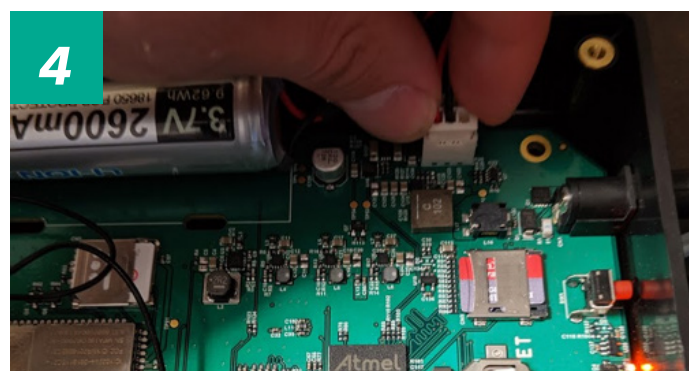
2. PLACE THE SMARTGATEWAY ON A SHELF OR USE INDUSTRIAL VELCRO TO MOUNT ON THE WALL. PLUG THE POWER ADAPTER INTO THE ELECTRICAL OUTLET.



3. ENSURE THAT YOU SEE LIGHTS FLASH ON THE SMARTGATEWAY.



4. REMOVE THE LID FROM THE SMARTGATEWAY AND CONNECT THE INTERNAL BACKUP BATTERY. WHEN DONE, PUT THE LID BACK AND SECURE IT WITH THE FOUR PROVIDED SCREWS.



## STEP 2 DEPLOYING PROPERTY AND SMARTGATEWAY WITH MOBILE APP

1. ENSURE YOU HAVE THE LATEST COPY OF THE KNOVI MOBILE APP, WHICH IS AVAILABLE AT THE APPLE APP STORE AND GOOGLE PLAY STORE

[HTTPS://APPS.APPLE.COM/US/APP/KNOVI-MOBILE/ID1484981303?APP=ITUNES&IGN-MPT=UO%3D4](https://apps.apple.com/us/app/knovi-mobile/id1484981303?app=itunes&ign-mpt=uo%3D4)

[HTTPS://PLAY.GOOGLE.COM/STORE/APPS/DETAILS?ID=COM.KNOVI.KNOVIMOBILE.ANDROID&HL=EN](https://play.google.com/store/apps/details?id=com.knovi.knovimobile.android&hl=en)

2. ENSURE THAT THE SMARTGATEWAY IS POWERED UP BEFORE INSTALLING THE SMARTDRAIN SENSORS.

(SEE STEP 1 FOR SMARTGATEWAY INSTRUCTIONS)

3. OPEN THE KNOVI MOBILE APP ON YOUR PHONE. IF THIS IS YOUR FIRST TIME USING THE APP, YOU WILL NEED TO CREATE AN ACCOUNT. IF YOU HAVE ALREADY CREATED AN ACCOUNT, SIGN IN. AFTER SIGNING IN, YOU WILL SEE THE PROPERTIES PAGE. TOUCH THE THREE WHITE LINES AT THE UPPER LEFT-HAND CORNER OF THE SCREEN AND YOU CAN THEN SELECT THE "ADD CLIENT/PROPERTY WIZARD."

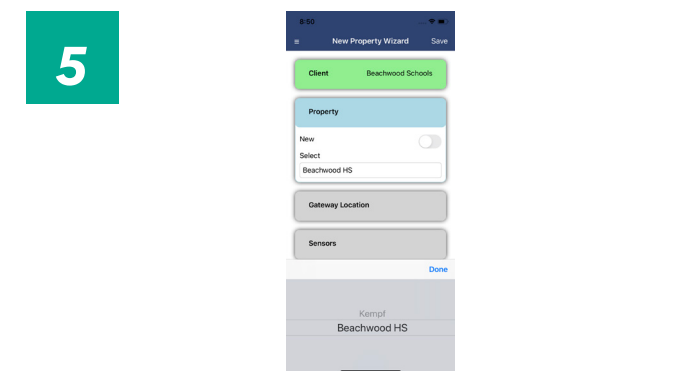
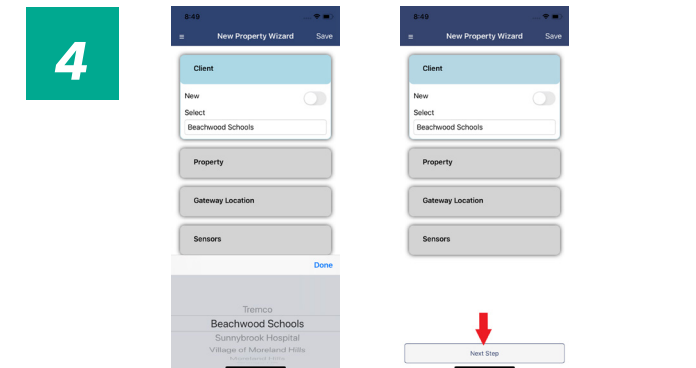
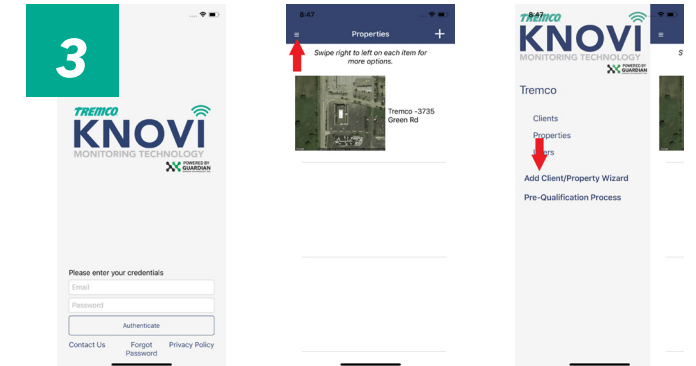
4. SELECT WHETHER THIS IS A NEW OR EXISTING KNOVI CLIENT, THEN HIT "NEXT STEP."

5. IN THE NEW PROPERTY WIZARD, SELECT THE PROPERTY FROM THE LIST IF IT IS AN EXISTING KNOVI PROPERTY (ALREADY HAS AT LEAST ONE KNOVI SENSOR ON THE ROOF), FOLLOWED BY NEXT STEP AT THE BOTTOM.

GOOGLE PLAY STORE



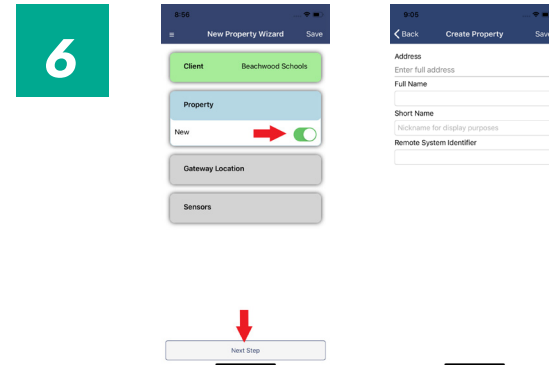
APPLE STORE



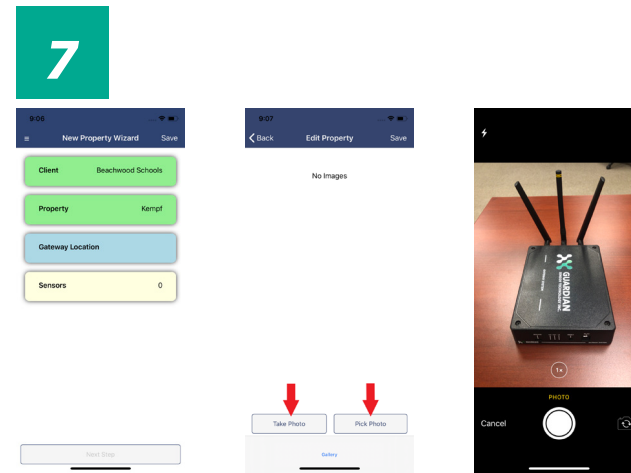


## STEP 2 CONTINUED DEPLOYING PROPERTY AND SMARTGATEWAY WITH MOBILE APP

6. IF YOU ARE DEPLOYING TO A **NEW** PROPERTY, HIT THE NEW BUTTON AND THEN NEXT STEP. YOU CAN THEN FILL IN ALL OF THE REQUIRED INFORMATION INCLUDING THE REMOTE SYSTEM IDENTIFIER (PROVIDED TO YOU BY TREMCO.)



7. WITH YOUR SMARTPHONE, TAKE A PHOTO OF THE SMARTGATEWAY INSTALLATION LOCATION. WHEN THE "GATEWAY LOCATION" LABEL IS BLUE, CLICK IT AND SELECT ADD PHOTO. SELECT USE PHOTO, THEN SELECT THE CHECKMARK TO CONTINUE.



CONTINUE TO ROOF TO INSTALL DRAINS...

## STEP 3 ATTACHING SMARTDRAIN TO DRAIN WITH UNIVERSAL BRACKET

\* IF YOU ARE UNABLE TO MOUNT THE SMARTDRAIN ON AN EXPOSED BOLT ON THE DRAIN CLAMP, THE UNIVERSAL MOUNTING BRACKET IS REQUIRED

1. A SMALL HOLE IS REQUIRED TO MOUNT THE BRACKET ONTO THE DRAIN. IF THE DRAIN COVER HAS A CENTRAL BOLT THAT IS USED TO TIGHTEN THE DRAIN TO THE ROOF, NO DRILLING IS REQUIRED.



2. USE THE PROVIDED ALUMINUM NUTS AND BOLTS TO ATTACH THE RIGHT SIDE OF THE BRACKET TO THE TOP OF THE DRAIN.



3. UNSCREW THE TWO ALUMINUM PHILIPS HEAD SCREWS ON THE 1" BY 1" CLIP OF THE UNIVERSAL BRACKET. ATTACH THE SMARTDRAIN TO THE BRACKET AND TIGHTEN THE SCREWS.



4. REMOVE THE FOUR SCREWS ON THE SMARTDRAIN BOX, REMOVE THE COVER AND TURN ON THE SMALL SWITCH TO ACTIVATE THE SMARTDRAIN. ONCE THE DEVICE HAS BEEN ACTIVATED, PLACE THE COVER ON THE DRAIN BOX AND TIGHTEN SCREWS.



5. SET SENSOR ON ROOFING MEMBRANE OR TO DESIRED HEIGHT. USE A WRENCH TO TIGHTEN THE INSIDE BOLT WHEN DESIRED HEIGHT IS ACHIEVED.



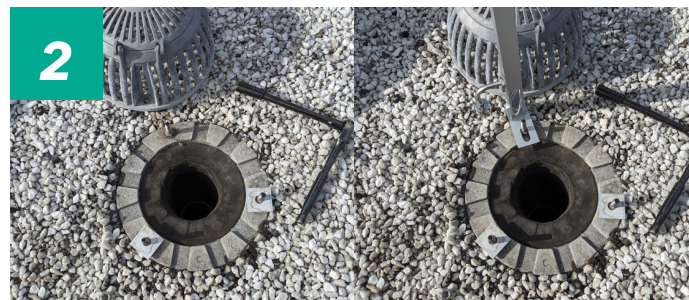


## STEP 3.1 (IF REQUIRED) ATTACHING SMARTDRAIN TO DRAIN WITHOUT UNIVERSAL BRACKET

1. REMOVE NUTS SECURING THE DRAIN COVER.



2. PLACE THE PROVIDED SQUARE ALUMINUM WASHERS ON ALL BUT ONE BOLT AND PLACE THE SMARTDRAIN ON THE REMAINING BOLT WITH NO WASHER.



3. PLACE THE DRAIN COVER BACK ON TOP OF THE DRAIN AND TIGHTEN THE NUTS, SECURING THE DRAIN TO THE ROOF.



4. REMOVE THE FOUR SCREWS ON THE SMARTDRAIN BOX, REMOVE THE COVER AND TURN ON THE SMALL SWITCH TO ACTIVATE THE SMARTDRAIN. ONCE THE DEVICE HAS BEEN ACTIVATED, PLACE THE COVER ON THE DRAIN BOX AND TIGHTEN SCREWS.

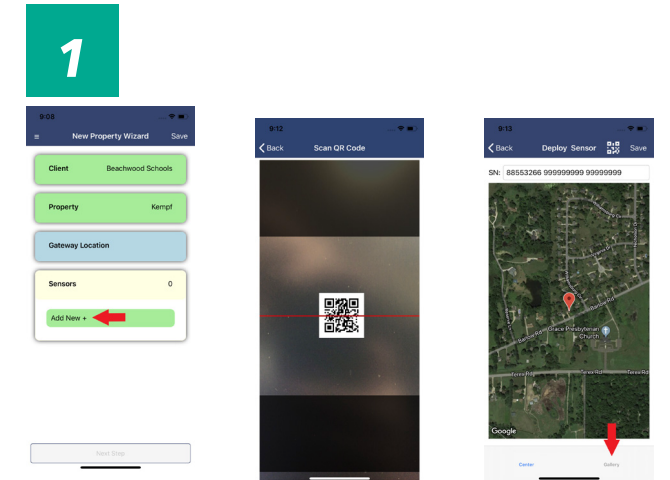


5. SET SENSOR ON ROOFING MEMBRANE OR TO DESIRED HEIGHT. USE A WRENCH TO TIGHTEN THE INSIDE BOLT WHEN DESIRED HEIGHT IS ACHIEVED.

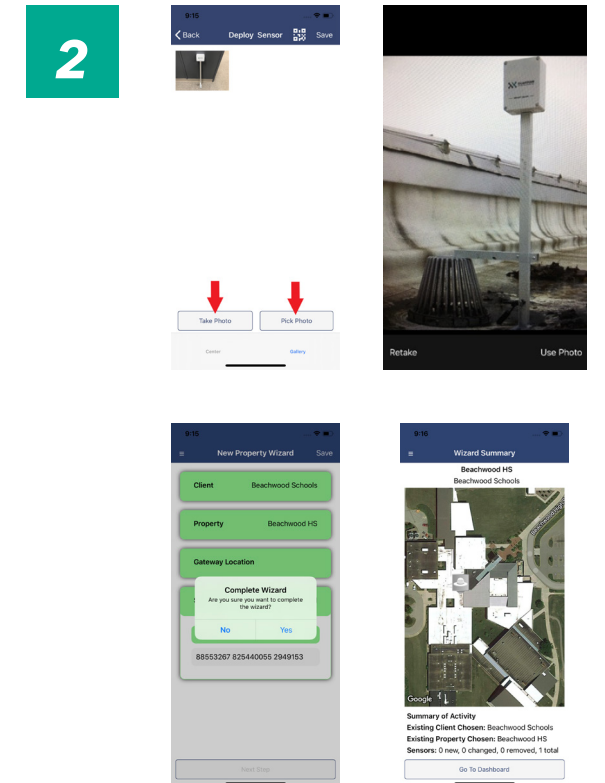


## STEP 4 ADDING SENSORS WITH THE MOBILE APP

1. REGISTER THE INDIVIDUAL SERIAL NUMBER OF THE SMARTDRAIN YOU ARE INSTALLING ON THE PROPERTY. CLICK ADD NEW; YOU WILL BE TAKEN TO THE DEPLOY SENSOR PAGE. YOU CAN MANUALLY TYPE IN THE SERIAL NUMBER OF THE SMARTDRAIN OR USE THE QR SCANNER TO SCAN THE QR CODE; BOTH ARE LOCATED ON THE INSIDE OF THE SENSOR. AFTER YOU'VE ENTERED THIS INFORMATION, A ROOFTOP MAP WILL APPEAR. NOW, DRAG THE MAP AROUND SO THE DROP PIN IS IN THE LOCATION OF THE DRAIN WHERE YOU ARE INSTALLING THE SMARTDRAIN SENSOR. ONCE IT IS PIN-POINTED, HIT THE GALLERY BUTTON.



2. GO TO THE NEWLY INSTALLED SMARTDRAIN SENSOR. CLICK ADD PHOTO TO TAKE A PHOTO AND SELECT USE PHOTO ONCE THE PHOTO HAS BEEN CAPTURED. CLICK THE CHECKMARK TO COMPLETE ADDING THE SMARTDRAIN SENSOR TO THE PROPERTY. **REPEAT STEP 4** FOR ALL THE SMARTDRAIN SENSORS YOU ARE INSTALLING BY CLICKING ADD NEW + IN THE WIZARD. ONCE YOU HAVE INSTALLED ALL THE SENSORS ON THE PROPERTY, YOU CAN THEN HIT THE CHECKMARK IN THE TOP RIGHT-HAND CORNER OF THE WIZARD TO COMPLETE THE INSTALL. YOU WILL THEN RECEIVE AN INSTALLATION SUMMARY.



## HAVE AN ISSUE?

IF YOU HAVE ISSUES AT ANY POINT DURING  
THE INSTALLATION PROCESS, PLEASE CONTACT  
GUARDIAN SENSOR TECHNOLOGY **1.833.70SMART**  
(1.833.707.6278).



*Roofing & Building Maintenance*

Part of Tremco Construction Products Group

Copyright 2021 7397